

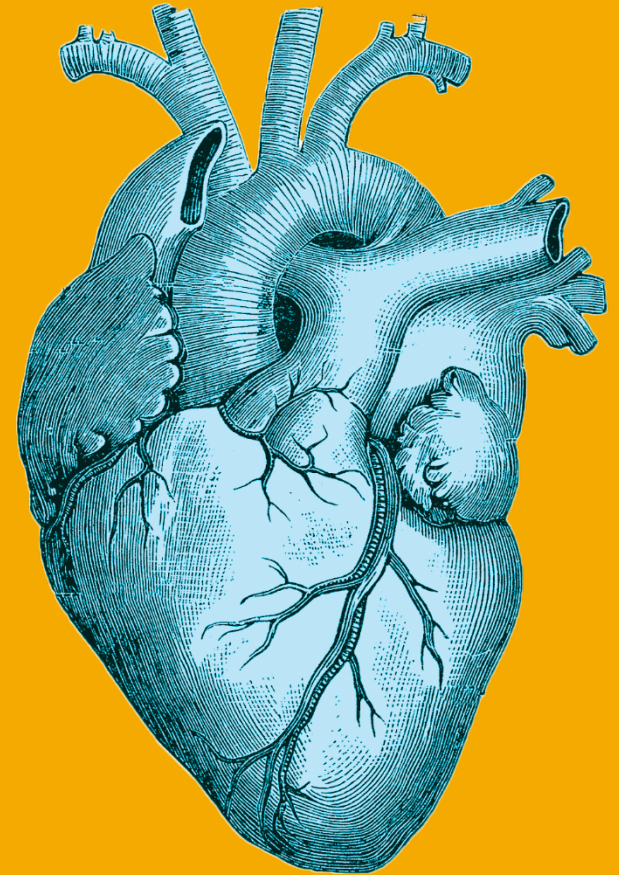


THE UNIVERSITY of EDINBURGH
Edinburgh Medical School

Applying for Medicine

A summary of the
application process

Debbie Clark
Undergraduate Admissions
Officer



www.ed.ac.uk



Standard academic entry requirements (and FLAG applicants)



THE UNIVERSITY of EDINBURGH
Edinburgh Medical School

Most common

- SQA Qualifications: Nat 5 - English; Maths; Biology & Chemistry all at grade B. 5 x SQA Highers by the end of S5 at grades AAAAB to include Chemistry and two from Biology/Maths/Physics; S6: 2 x Advanced Highers at grades BB
- GCE Qualifications: GCSE – English; Maths; Biology; Chemistry all at grade B/6. 3 x A Levels in one set of exams at grades AAA to include Chemistry and one from Biology/Maths/Physics.
- International Baccalaureate: 37 points overall (incl TOK & EE) including 667 at HL in Chemistry and one from Biology/Maths/Physics (Biology should be taken to at least SL); plus SL English and Maths both at grade 5 (we accept both Analysis & Approaches and Applications & Interpretation)
- Graduate Applicants: UK 2:1 honours degree, or its international equivalent. Preference is given to those with a medical related subject (eg Biomedical/Medical Sciences; Nursing; Paramedic Science). We accept other science degrees predominantly in Biology; Chemistry; Maths or Physics; non-science degrees supplemented with SQA Higher/GCE A level Chemistry at a grade B; IB HL Chemistry at grade 5 or accepted equivalent; all with the same degree classification as above.

We also accept a range of international qualifications and requirements can be

Found here: <https://www.ed.ac.uk/studying/international/country>

www.ed.ac.uk



Minimum academic entry requirements



THE UNIVERSITY *of* EDINBURGH
Edinburgh Medical School

FLAG PLUS applicants ONLY

- SQA Qualifications: Nat 5 - English; Maths; Biology & Chemistry all at grade B. 5 x SQA Highers by the end of S5 at grades AAABB to include Chemistry and two from Biology/Maths/Physics; 2 x Advanced Highers at grades CC
- GCE Qualifications: GCSE – English; Maths; Biology; Chemistry all at grade B/6. 3 x A Levels in one set of exams at grades AAB to include Chemistry and one from Biology/Maths/Physics.
- International Baccalaureate: 36 points overall (incl TOK & EE) including 666 at HL in Chemistry and one from Biology/Maths/Physics (Biology should be taken to at least SL); plus SL English and Maths both at grade 5 (we accept both Analysis & Approaches and Applications & Interpretation)

www.ed.ac.uk



Additional Consideration



THE UNIVERSITY of EDINBURGH
Edinburgh Medical School

FLAG Applicants

- Additional consideration in terms of academic score

FLAG PLUS Applicants

- Additional consideration in terms of academic score
- Additional consideration in terms of UCAT total score
- Guaranteed invitation to one of our Assessment Days

www.ed.ac.uk



Widening Access



THE UNIVERSITY of EDINBURGH
Edinburgh Medical School

Currently we offer extra support

For non-graduate applicants who:

- Are care experienced
- Reside in a geographical area identified by the Scottish Government as being “deprived” in terms of income, resources and opportunities
- Attend a school of low progression to Higher Education and / or low attainment
- Have significant caring responsibilities
- Are refugees or asylum seekers
- Have participated in recognised access programmes (ie SWAP)

For graduate applicants who:

- Are care experienced
- Are refugees or asylum seekers

www.ed.ac.uk



Further information: Widening Access offers



THE UNIVERSITY of EDINBURGH
Edinburgh Medical School

Eligibility criteria for our contextual “flags” and a link to the current online eligibility checker **(the eligibility checker is yet to be updated for 2023 entry – this will happen in mid/late September 2022)**:

www.ed.ac.uk/studying/undergraduate/access-edinburgh/widening-access-offers

Degree Finder (outlining the minimum academic entrance requirements for Widening Access applicants):

www.ed.ac.uk/studying/undergraduate/degrees

www.ed.ac.uk

  [applyedinburgh](#)

UCAT

Clinical Aptitude Test

UCAT is another of our requirements and you must take the test in the year you apply to us via UCAS.

Dates for booking tests and the dates from which testing will begin and end in 2022 are published on the UCAT website.

How we use UCAT at Edinburgh:

- ***NEW FOR 2023*** All applicants (with the exception of FLAG PLUS) must meet or be above our UCAT total score cut-off of 2470 in order for their application to be considered further.
- We currently use your total score to rank you within the current cohort of applicants; then by dividing the cohort scores into ten equal groups we allocate a score for each group
- We also score your Situational Judgement Section (SJT) separately from your total UCAT score. Unfortunately anyone achieving a band 4 in the SJT would not be considered any further within the application process
- All scores are communicated to us directly by UCAT but if we don't receive your score we'll contact you



www.ed.ac.uk



applyedinburgh

Personal statements



THE UNIVERSITY of EDINBURGH
Edinburgh Medical School

While no longer formally assessed it will play an important part in the assessment day. We advise you to consider the following:

Personal qualities and skills that you possess

- Evidence of these qualities and skills (for example: teamwork/empathy/communication skills)

Evidence of career exploration which may include:

- Work experience/shadowing with health professionals or in health promotion (eg nursing homes; volunteering with disabled people)
- Talking with doctors and medical students
- Attending a university information session/open day
- Reading/watching/listening to medical-themed literature/digital content/articles

(We value quality over quantity and look for clear evidence of reflection on experiences gained).

Non-academic achievements and interests: Medicine is a demanding subject and can prove stressful – we want to know more about you and how you balance study with everyday life!

We know work experience/shadowing may be difficult during these challenging times so check out the suggestions and remote options here:

<https://www.medschools.ac.uk/news/msc-releases-guidance-on-relevant-experience-to-study-medicine-during-the-covid-19-pandemic>

<https://www.rcgp.org.uk/observegp>

www.ed.ac.uk



Assessing your application

Screening

The weightings that we currently apply to each area of an application are given below:

Academics = 25%

UCAT score = 17.5%

Situational Judgement test (SJT) = 7.5%

Assessment day = 50%

- Our team check all the applications to make sure they meet the entry requirements before all are assessed by two members of staff independently
- If we need clarification of any details or missing information we will contact you through EUCLID for further information.
- Euclid sends automated emails so please regularly check your EUCLID portal for updates and requests for information
- Approximately 700 applicants will be shortlisted to attend an assessment day which may be either in person on site or virtually (online).



www.ed.ac.uk

  [applyedinburgh](#)

Assessments days (interviews)



THE UNIVERSITY of EDINBURGH
Edinburgh Medical School

Ordinarily, these would take place in person over a half-day at Edinburgh Medical School. It is likely that we will adopt a hybrid approach going forward with some face-to-face sessions and some 'virtual' although the format outlined below will remain unchanged.

- Due to take place in December 2022/January 2023 (possibly also February 2023 if required – to be confirmed)
- Half Day sessions which begin with a Welcome Talk
- Session involves four stations: three individual stations and one group station.
- We assess for the most important attributes we are seeking in our medical students based on a consultation of clinicians and teachers from within the medical school

The attributes we seek have been selected from those published by the Medical Schools council and can be found on their website: <https://www.medschools.ac.uk/media/2542/statement-on-core-values-to-study-medicine.pdf>

We would also suggest reading the GMC document 'Outcome for Graduates' on their website: <https://www.gmc-uk.org/education/standards-guidance-and-curricula/standards-and-outcomes/outcomes-for-graduates>

www.ed.ac.uk



Assessments days (interviews)

Format

- Not a typical MMI format
- Applicants are typically placed in groups of 6. The first three will rotate around the three individual stations whilst the other three are in the group exercise together.
- Each individual station lasts for 12 minutes with a 3 minute break in-between to allow the selectors time to mark the applicant they have just seen.
- The group exercise lasts for 45 minutes in total (35 minutes for the applicants to work on the task and 10 minutes for the selector to mark each applicant's performance).
- Once the first rotation has taken place the two groups of three will swap over (those in the individual stations will go to the group task and vice versa).



THE UNIVERSITY of EDINBURGH
Edinburgh Medical School

www.ed.ac.uk

  [applyedinburgh](#)

Decision making



THE UNIVERSITY of EDINBURGH
Edinburgh Medical School

- After Assessment Day, we review total application scores.
- We calculate how many offers we are going to make in each fee status category dependent on the number of places available
- All offers are made via UCAS and are all conditional as even if exam results are already achieved you must successfully become a member of Disclosure Scotland's Protecting Vulnerable Groups scheme.
- We typically have more applications in each fee status category than we have places available.



www.ed.ac.uk





Post offer

What happens now?

If accepting the offer as firm

- You'll receive guidance on how to complete your Protecting Vulnerable Groups application which is a requirement for all medicine students. You can read more about this here: <https://www.mygov.scot/pvg-scheme>
- You'll be asked to upload scanned verified copies of documents
- Apply for accommodation
- Confirmation – have you met the conditions of your offer?
- Medical Teaching Organisation communication – issued to applicants who meet their conditions of offer.
- Welcome Week - introduce you to Edinburgh and the Medical School.



Useful websites

Medicine website:

www.ed.ac.uk/medicine-vet-medicine/undergraduate/medicine

Twitter:

<https://twitter.com/EdinUniMedicine>

Facebook:

<https://www.facebook.com/EdinburghMedicalSchool>

Any questions?



THE UNIVERSITY of EDINBURGH
Edinburgh Medical School

Please email
medug@ed.ac.uk



www.ed.ac.uk

